



Whaddon News



MARCH 1993

A MOTHERING SUNDAY Service

will be held on

SUNDAY 21st MARCH at

9.45am in

THE PARISH CHURCH

ALL WELCOME

**THERE IS A
NATIONAL SPRING CLEAN
WEEK**

BEING HELD 16-25 APRIL

This a great
opportunity to clean up
Whaddon, and don't forget
the Best Kept Village
competition

In Aid of the next

Children's Christmas Party

** J U M B L E S A L E **

in Whaddon Village Hall

on Saturday 24th April

at 10.00 a.m.

**PARISH COUNCIL
ANNUAL GENERAL MEETING**

**Monday 22 March
8.30pm
in the Village Hall**

The Annual Parochial Church Meeting

will be held on

Friday, 19th March 1993

at 8.00pm in the Parish Church

PARISH COUNCIL REPORT

The Parish Council met at the end of November and in January.

Amongst matters discussed: the stream and problems of flooding; damage to the verge and stage of the road by the building site adjacent to Firbank in Bridge Street; retention of the fence on the corner of Bridge Street; condition of street and village signs; timetable of the library van; repair of pavements; replacement of litter bins and noticeboards; drain blockage in Meldreth Road; application for grant to assist with repairs to the Village Hall; and various planning matters.

Fred Bradley, Chairman of the Parish Council, has held a separate meeting with Mr Huxell, Planning Director of South Cambridgeshire District Council, and with Mr David Rush of the Planning Department.

The Parish Council have planned a Sunday morning viewing session of the proposals for the village sign

your opinions wanted

PLEASE COME on

SUNDAY, 14th MARCH
10-12noon

COFFEE in
THE VILLAGE HALL

Progress has been made on the play equipment. Climbing equipment has been decided upon and a firm selected to supply this; and plans have been made to repaint the existing swings.

FUNDRAISING IS NECESSARY - ANY IDEAS?

A car boot sale will be held in the summer holidays - donations of items for this event - as well as requests for individual pitches, are sought.

NEXT MEETING is the

ANNUAL GENERAL MEETING

on

MONDAY 22nd MARCH

at 7.30 p.m. Parish Council Business

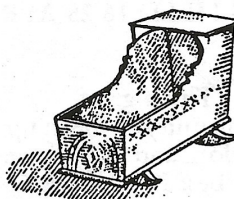
followed

at 8.30pm by the AGM

DID YOU KNOW that there is a useful Millerbus Service 120 from Whaddon to Cambridge and back on Saturday mornings?

It departs from Whaddon Telephone box at 9.17am; arriving at Drummer Street at 10.00am.

It leaves Cambridge Drummer Street at 12.15pm, arriving back at Whaddon at 1.00pm.



CONGRATULATIONS

Giles Lloyd Hamilton

born 10 1.93 to Hazel

*** **

W.I. Report

The second wave of W.I. in the village ended after 21 years with the AGM in January. During this time members have worked on various projects in the village.

One of the first undertakings was the making of the curtains for the Village Hall, when sheets were tie-dyed and later stitched together and fireproofed to hang at the large window and the alcove in the hall.

A notice board was also fixed to the inside wall.

In 1985 facilities in the ladies toilet in the hall were considerably improved and upgraded.

At the inception of the Mothers and Toddlers group in the village, toys were donated by members. Last year toy shapes were donated to the Toy Library in Melbourn when it was opened.

The W.I. has provided a cake stall at the annual village fete for several years, and more recently has been responsible for providing cream teas.

Within the W.I. movement itself Whaddon W.I. made an embroidery of a map of Whaddon, which has been incorporated in the County Wallhanging which represents all the W.I.s in Cambridgeshire. Members also worked together to make a kneeler for the recently opened chapel at the crematorium.

Each year the W.I. has chosen a charity to raise money for, and last year the fund for providing accommodation for Homeless Young Women in Cambridge benefitted

The programme devised by the committee for each year has always been interesting and varied and visitors and guests have always been welcome at the monthly meetings.

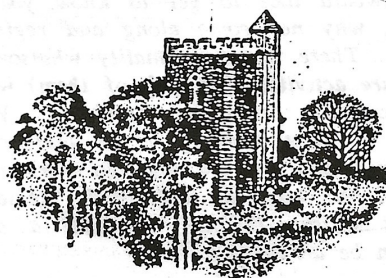
Numbers of members have fluctuated over the years, with 32 members at one time. However, 1992 had only 12 members and it was felt that the W.I. in Whaddon should be suspended for 3 years.

The first President was Mrs Gillian Marshall, and in recognition and appreciation of her

loyalty to the W.I. over 21 years members presented her with an engraved glass vase.

The W.I. movement in the village has been an opportunity for members to make friends, share a common purpose and work together as a team. These skills will not be lost, but will continue in each individual who has been connected with the W.I.

* Sadly we have to report that Mrs Gillian Marshall died peacefully on Sunday 21st February



WHADDON CHURCH SERVICES

Even though the Parish awaits the appointment of a new Vicar, there is always a regular Sunday morning service at 9.15am in the Parish Church.

For advice or guidance on pastoral matters the Rev. Jim Greasley can be contacted on Melbourn (95) 243445.

The Methodist service is at 10.00am every Sunday in the chapel. The Rev Michael Belfield can be contacted on Royston (95) 243445.

The Sunday school meets at 10.00am in the Methodist chapel. New members are always welcome. Contact Margaret Hewat on Bassingbourn (95) 247611.

WHADDON UNDER 60's

As most of you know, the Whaddon W.I. has wound up. Whilst this is the end of one era perhaps a great phoenix can rise from the ashes. Many people have expressed a desire to meet fellow villagers, but without the formality of committees etc.

Those W.I. stalwarts who have gone on to the end would also like to continue their social gatherings. The toddler group was very successful some years ago, but lack of toddlers has caused its demise. There are many people who would seem to welcome a social get-together on a regular basis in the village. Should we seize our opportunity?

There is an active over 60's group in the village, what about an under 60's group? Over the years the village has lost all its focal points - the school, the pub, the shop, etc. We are now an unfocused group of three parts, and this would seem the ideal opportunity to form a focus.

If you would like to get to know your fellow villagers, why not come along and register your interest. There is no formality whatsoever, and any future activities (or lack of them) will be at the behest of prevailing opinion. We must organise a first meeting as a platform from which this new venture can go forward. All those villagers who are interested, please contact Margaret Wilson (207219) so that a date and place can be arranged.

Christmas Celebrations

The Village Hall Committee put on a wonderful celebration of 12th Night. The food was delicious (and extremely plentiful), the drinks were generous, and the entertainment was superb. Unfortunately some people had to be disappointed because the limited number of tickets were all sold out. Next year - book early! Thanks again for a really good night out.

There was almost a full complement of children enjoying the annual party this year. Once again they tucked in to wonderful home-made cakes and goodies, and were entertained by a very good magician. The balloon net supplied by Claire Wigg provided great entertainment whilst the children waited for Father Christmas, and then they all received a present from his great big sack.

Thank You

This issue is brought to you courtesy of Prim and John Stevens from Meldreth Road. A big thank you for the copying facility they have given.

Sir Anthony Grant has a surgery to meet constituents on 20th March. Should you wish to make an appointment please ring the constituency office at Hardwick - Madingley 211444. The place will be The Causeway, Bassingbourn.

Dates for your diary:

Village Fete: 5th June

Church Fete: 24th July

Summer Barbeque: 31st July

Your contributions to the newsletter are always welcome. Please contact:
Clare Byatt 207429; Kathrine Mitchell 207400; Margaret Wilson 207219