

USEFUL TELEPHONE NUMBERS

Citizens Advice:

Cambridge 08448 487979
Royston 08444 111444

Councillors:

County: Linda Oliver 01767 650430
District: Nigel Cathcart 01763 243637
David McCraith 01763 248249

Doctors:

Orchard Surgery, Melbourn 01763 260220
The Health Centre, Royston 01763 242981
Market Hill Surgery, Royston 01763 248111
Roysia Surgery, Royston 01763 243166

Health:

NHS Direct (24 hour service) 0845 4647

Hospital:

Addenbrooke's Hospital 01223 245151

Police:

Non Emergency Number 101

Samaritans: 08457 909090

Transport:

National Rail Enquiries 08457 484950
Stagecoach Cambus 08706 082608

Utilities:

Anglian Water 08457 145145
Cambridge Water Company 01223 403000
Electricity Emergency & Supply Loss 08007 838838

Vets:

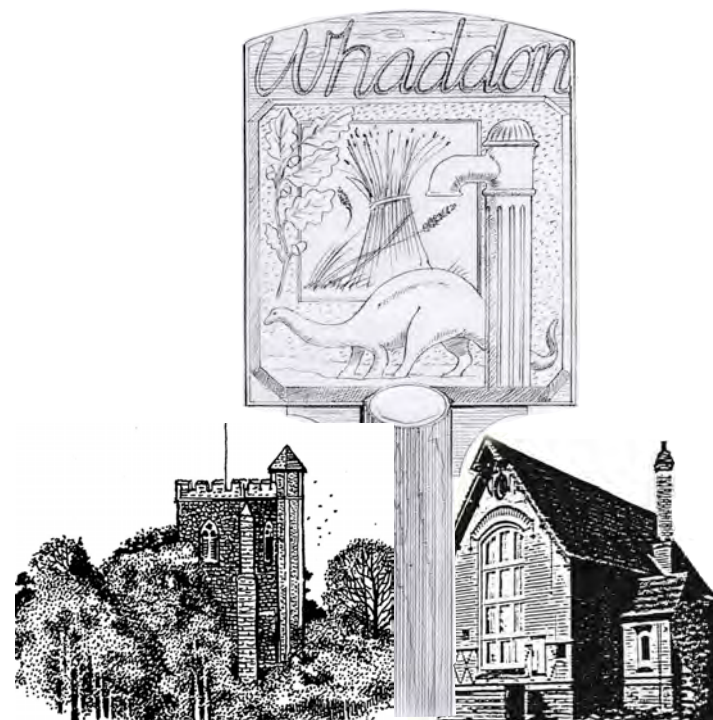
Melbourn Veterinary Surgery 01763 262696
Royston Veterinary Centre 01763 242221

Village Hall Booking:

Wendy Evans 01223 207703

WHADDON NEWS

NOVEMBER 2012



WHADDON NEWS ADVERTISING RATES

Half page advert for one issue £12.50

Half page advert for one year (4 issues) £40.00

Other options may be available on request.

Contact Kate French C 208207 or email kate.a.french@gmail.com

www.whaddon.org

DATES FOR YOUR DIARY

12th Nov	Parish Council
18th Nov	Church Tower Celebration Service
1st Dec	Christingle making
2nd Dec	Christingle Service
9th Dec	Children's Christmas Party Carol Service
16th Dec	Village Carol Singing
24th Dec	Informal Carols
25th Dec	Family service
14th Jan	Parish Council
11th Feb	Parish Council
11th Mar	Parish Council

NEWSLETTER

*The deadline for the next newsletter is **16th March**. Once again items of village interest are always welcome.*

*Joan Pascoe C 208062
joanpascoe@aol.com*

VILLAGE HALL AVAILABLE TO HIRE

Special rates for those within the village - ideal for birthday parties and most functions.

Contact:
Wendy Evans
108, Church St.
01223 207703



LIST OF PARISH COUNCILLORS

Ms Malan Peyton	Chairman	C 207358	Ermine Farm, Dyers Green
Mr Lee Ginger	Vice chairman	C 208077	43 Bridge Street
Mr Henry Burgess	Councillor	C 208441	10 Bridge Street
Mrs Kate French	Councillor	C 208207	21 Bridge Street
Mrs Jennifer Lewis	Councillor	C 208356	20 Bridge Street
Prof. Tony Milton	Councillor	C 207105	Chestnut Tree Farm, Meldreth Road
Mr Randall Scott	Councillor	C 208253	26 Bridge Street
Mrs Gabby Van Poortvliet	Clerk/ Finance Officer	C 208450	134 Bridge Street, Dyers Green Whaddonpcclerk@yahoo.co.uk

NEIGHBOURHOOD WATCH TEAM

Mike Monks	Whaddon Village Coordinator	58 Bridge Street	C 208236
Malan Peyton	Dep. Village Coordinator Parish Council NHW Rep.	Ermine Farm, Dyers Green	C 207358
Coordinators:			
Karen Coningsby	Meldreth Road/Church Corner	17 Church Street	C 207514
Carole Aldred	Church Street/Town Farm Close	104 Church Street	C 208147
Wendy Evans	St Mary's Close/Church Street/ Town Farm Close	108 Church Street	C 207703
Maria Mould	St Mary's Close/Lower Bridge Street	39 Bridge Street	C 207231
Mike Monks	Ridgeway Close/Upper Bridge Street	58 Bridge Street	C 208236
Malan Peyton	Dyers Green	Ermine Farm, Dyers Green	C 207358

Local Enforcement:

Chief Inspector Darren Alderson	Area Commander
Inspector Chris Savage	Safer Neighbourhood Manager
Detective Inspector Ian Simmons	Area Crime Manager

Neighbourhood Policing Team (Cambourne):

Sergeant Jon Capes	Sector Sergeant
PC Clare List	Neighbourhood Policing Constable
James Lynch	Police Community Support Officer (PCSO)
Lyndsay Gardiner	Police Community Support Officer (PCSO)



WHADDON NEIGHBOURHOOD WATCH

(whaddonnhw@gmail.com)



After an extended period with few crime problems in the village, we have not been so lucky during the last quarter. Unfortunately for the residents involved, there was a serious burglary in Bridge Street involving the theft of valuables and considerable damage to the property as the thieves gained entry. Further down Bridge Street, at Ermine Farm in Dyers Green during the early afternoon, five youths climbed fences and proceeded to chase the grazing sheep through the electric sheep nets. Posts were broken, nets dragged down and the sheep traumatized. The youths, who were followed, went on to Bassingbourn where they committed further damage before the police apprehended them. At the Golf Centre, Ken Green has had a number of metal signs stolen. He would be grateful for any feedback on who might be doing this. Finally, the Village Hall was targeted with the outside tap found turned fully on. Luckily it was discovered the same evening and turned off but soon after it was turned on again resulting in flooding across the road. The tap has now been isolated and the water switched off. Two youths on bikes were seen but were not close enough to be challenged. On a more positive note, the village neighbourhood watch e-mail system is now up and running at: whaddonnhw@gmail.com. We currently have some 90 houses with e-mail loaded into a google mail (gmail) address book and are urgently trying to list the remaining 30 plus who we think are missing from our list. If you have given your e-mail address to one of the NHW coordinators and have not received any messages then would you check your

spam. If nothing there then please contact me on the above e-mail address. If you have yet to complete the proforma that has been put through doors would you e-mail me your name and address. It seems that around 15% of the village does not have e-mail so we talking to most of the village. With the system working and proved, we will use it to communicate information on the many other events and issues going on in Whaddon. MRM

Remember – dial 999 to report a crime actually happening or when lives are at risk and for a non-emergency matter call 101. If you report an incident to the police please let your neighbourhood watch coordinator know.

PAPER COMPETITION

£600 up for grabs in paper recycling competition

Six lucky residents will win £100 each in a fantastic paper recycling competition run by South Cambridgeshire District Council this winter. Sponsored by Amey Cespa, the competition aims to reward residents who regularly recycle paper in their blue bin paper caddy. It's easy to take part, just look out for the winter *South Cambs Magazine* which will hit doormats from 26 November. Once you have received your magazine, turn to the waste and recycling pages to find the competition entry form and details on how to take part. For more information call 03450 450 063 or visit www.scams.gov.uk/papercompetition



Do your bit to bring better broadband for all

Have you registered for the Connecting Cambridgeshire campaign to bring better broadband access for everyone across the county?

Time is running out and we need as many people as possible to register before December 2012, when a supplier will be selected and planning for the big broadband rollout begins.

It only takes a minute to go online at www.connectingcambridgeshire.co.uk or fill in a Freepost reply form in the leaflet at your local library or council offices.



WHADDON VILLAGE CHILDREN'S CHRISTMAS PARTY 2012

Sunday 9th December
4.00-5.30 pm
in the Village Hall.



The traditional children's Christmas Party. There will be party games and we are sure that there will be a very special visitor ..

All children within the village of Whaddon of Primary School age and under will be invited. Personal invitations will be delivered at the end of November.

Please note that all children should be accompanied by a parent/carer.

We would appreciate any offers of help in organising this event, before or on the day. For further details please contact:

**Andrea Cook at 14 Bridge St;
C 207066**

Or email andieroach@yahoo.com



WHADDON GOLF CLUB

QUIZ NIGHTS

The winter season of Quiz nights commenced in September and will continue each third Wednesday of the month until the Spring.

The sessions include supper, are very friendly and commence at 8 pm.

Everyone is welcome to come, either with a team or individually.

Future dates are:

Nov 21st
Dec 19th
Jan 16th
Feb 20th
March 20th

ST MARY'S CHURCH WHADDON



A service of CELEBRATION

to mark the completion of the
repairs to the tower at
St Mary's Whaddon

4.00 pm Sunday 18th
November 2012

The service will be led by
Rev Dr Donald McFadyen
and will include choral music
sung by choristers from
St George's Chapel Windsor

All Welcome

Christingle

Please come to Carolyn
Gallery's house 68 Bridge
Street at 3pm on
Saturday 1st December
to help make the
Christingles for the service
on 2nd December.



Whaddon Carol Singers

We will be Carol singing around
the Village on **Sunday 16th
December**—weather permitting

Meet **4pm** at the **Village Hall**
Starting along Meldreth Road at
4.10pm

All welcome to come and join in.

Transport and village locations
will depend on the weather

Followed by Mulled Wine and
Mince Pies at the Golf Range for
the singers.

COLLECTING FOR ST MARY'S CHURCH



St Mary's Church Fete

On behalf of St Mary's PCC we would
like to thank everyone who helped and
supported us at the Church Fete on 17th
July. With everyone's support we raised
a profit of £2023.27.

CASH POSITION AT 31ST MARCH 2012

Bank balance at 1st April 2011	£24,032
Less deficit for the year	-£3,599
Bank balance at 31st March 2012	£20,433

All funds are held at Barclays Bank, Royston - £4,582 (Community Account) and
£15,851 (deposit account)

Of the bank balance the following has been earmarked for ongoing projects:

Parish Paths Partnership - footpath grant	£470
Bridge Street Phone Box - refurbishment/conversion to library	£77
Reduction in village speed limit and Meldreth Road traffic calming measures	£3,100
Bridge Street road safety signage	£1,300
Diamond Jubilee Celebrations	£250
Parish Plan	£1,000
	£6,197
General reserve	£14,236
Total reserves	£20,433

The Parish Clerk will be happy to answer any queries about the financial statement

PC Repairs

Advice & Installation of Home Networks

Help with Selecting a Computer

Fault Finding

Brian Girling 01223 208529 (Wimpole)

E-mail bg@moncraft.co.uk

We can also provide the following services:
Design of brochures, posters, business cards etc.
A4/A3 laminating • A4 Comb-Binding
Small print runs on A6 to A3 media

**WHADDON PARISH COUNCIL
FINANCIAL STATEMENT FOR YEAR ENDED 31 MARCH 011/12**

2010/11	INCOME	2011/12
£15,950	Precept	£15,950
£648	SCDC Grass Cutting Payment - verges	£486
£824	VAT repayment	£543
£210	Advertising - Village Newsletter	£120
£8	Bank interest	£8
£250	Other income	£0
£17,889	Total	£17,107

	EXPENDITURE	
£4,429	General Administration	£2,342
£3,955	Wages & expense allowances	£3,955
£496	Recreation Ground - repairs & maintenance	£574
£1,486	- grass cutting	£1,254
£0	Village Hall - grant to Whaddon Village Hall & Recreation	£1,354
	Ground Trust (WVHRGT) for running costs	
£0	- transfer of funds ring-fenced for Village	£6,452
	Hall refurbishment & playground maintenance to WVHRGT	
£2,267	- costs of setting up WVHRGT	£0
£816	Grass Cutting – verges	£1,020
£0	- church yard	£80
£950	Fixed assets - salt bins & recycling bin	£0
£1,905	Bus service trial	£0
£50	Charitable donation	£100
£0	Phone box refurbishment	£173
£0	Path clearing - Pickering Woods	£360
£0	Replacement window for Village Hall	£2,540
£0	Diamond Jubilee Celebration	£502
£16,354	Total Expenditure	£20,706
£1,535	SURPLUS/(DEFICIT) FOR THE YEAR	-£3,599

DECEMBER SERVICES

2nd December 3.00 pm Christingle Service
In aid of the Children's Society



9th December 6.00 pm Tradition Family Carol Service followed by mulled wine and mince pies



16th December 10.00 am Morning Prayer

23rd December 9.15 am Holy Communion

24th December 5.00 pm Informal Carols by candle light. A chance for a short break in the midst of Christmas preparations to join in singing some well-known carols. (bring lanterns, torches etc)



25th December 9.15 am Family friendly Christmas Day Service with shortened Holy Communion



WHADDON GOLF CENTRE

01223 207325

8.30 'til late

BAR

COFFEE

FOOD

SNACKS

MORE THAN GOLF

VILLAGE SHOP

PAPERS

MILK

BREAD

JUST ASK US TO ORDER



An update on Broadband in Whaddon

Residents will be painfully aware of the poor provision of broadband in the village. Some persons can get speeds of between 2 and 3 megabits/second (mbs), but others, particularly the further they get from the exchange at Arrington, struggle to obtain a basic level of service.

A new page on the village web site (<http://www.whaddon.org/broadband-whaddon>)

Includes some of this information here and also links to other information on the web to tell you more about the problems and issues.

The problem in Whaddon

Whaddon is connected to the Arrington telephone exchange. You will have read in the media about BT updating many of its exchanges to newer technologies (one of BT's names is the "21st Century Network"). Unfortunately, many/most rural exchanges, of which Arrington is one, are not included in this programme. BT are not interested in rural exchanges like ours as there isn't the money in it to make it worth upgrading it themselves.

The further one is from an exchange, the harder it is to get fast and reliable services. Those in towns and larger villages tend not to be far from their exchanges; Whaddon, however, is at a minimum of 4 km from the exchange—problem number 1. Problem number 2 is the quality of the infrastructure; the copper wires are long, old and not in a good state of repair (just talk to any BT

engineer). Problem number 3 is that most phone lines in the UK go to the exchange via a local distribution cabinet, but Whaddon is among the less than 10% of locations in the UK where our lines are directly connected to the exchange, meaning that it is much harder (i.e. more expensive) for BT to improve the technology.

What can be done about it, given that BT are unlikely to do anything themselves?

Doing it ourselves?

Two or three years ago some villagers funded a study by Rutland Telecom to bring a fibre cable from Arrington to the village, which we would have had to help fund in some way. Technical difficulties arising from the direct connection we have to Arrington meant that the solution that Rutland Telecom proposed would not work.

You may have read of various places in the UK getting together and investing in faster broadband. We have looked at one of the more local examples of this, in Preston near Hitchin, a village with a very similar setup to our own. Preston has achieved this by raising some £35,000 from its residents. It is possible that we could do something like that here, and we have been exploring the options. At the moment, however, we are awaiting the outcome of initiatives by Cambridgeshire County Council (CCC) before striking out on our own.

whole village. You should see this during the next few months as it has been advertised locally and nationally recently and we await the County Council go ahead so that we can get signage erected.

One other project we as a council have supported is the refurbishment of our village hall. We have in position now a Village Hall and Recreation Ground Trust the members of which are drawn from the village and users of the hall. The Trust has made applications to us for monies to go towards the replacement of the single glazed windows that were causing so much condensation and had rotted with double glazed units. Whilst some felt we should have had wooden windows, in the end the extra cost and maintenance could not be justified and consequently modern plastic units were chosen. We also help to maintain the recreation ground itself, by giving a grant to help with the cost of keeping the grass cut.

This year has also seen the chance for groups to submit proposals to obtain monies from the Parish Council. We have been very lucky in Whaddon to have what is called section 106 monies. This money comes from the developer of St Mary's Close via South Cambs District Council and it is to be used mostly on outside space for the benefit of villagers.

This year was an election year for our parish and monies had to be set aside so, if an election was required, we had the money available to do that. However we did not have more candidates than the 7 needed so an election was not called. I would like to thank my fellow parish councillors for all their support. We have had a few changes this year with Dr Strudwick and Mr Philip Neale standing down due to work commitments and welcoming Prof Tony Milton and Mr Randall Scott.

We currently have one vacancy so if you would like to join us let the clerk know, her contact details are in this newsletter or on the website, whaddon.org. As a Parish Council we have been supported by our District Councillors, Nigel Cathcart and David McCraith and our County Councillor Linda Oliver.

Our clerk Gabrielle van Poortvliet has kept us all under control and we have had many new regulations to come to terms with this year including a change in our complaints procedure, thank you Gabby.

We all hope to see you at our annual Parish meeting on April 22nd 2013, this is not a Parish Council meeting, so no boring procedural stuff but a chance to get together as a village to discuss village matters.

Malan Peyton

ANNUAL PARISH COUNCIL REPORT

As I write this and look back over the last year I realise how much, we as a village, have achieved.

Firstly you may well be reading this in our newsletter or on our website. We have had a change in the newsletter making it easier to store for reference and, as it has proved to be popular, it is now with us for good and our thanks go to Joan Pascoe and Kate French for all their efforts to bring it about .

For about 7 years we wanted to have some affordable homes built within our village. We had hoped to have been able to get them built much sooner than they were but now we have a lovely development which has had many compliments from outside and within the village. One person reported that someone from outside the village said how nice our new "executive" homes were !

Started in October last year and occupied in April/May we are happy to say that most of the houses have been allocated to families with local connections, something we as a Parish Council were determined should happen.

We are happy to welcome our new residents both those in St Mary's Close and elsewhere in the village.

Then, shortly after the houses were occupied, we had the Jubilee celebrations where all villagers could come together and enjoy a wonderful tea made by villagers themselves. We, of course, had rather better weather than Her Majesty. As a parish we decided to give money for a gift to the children of the village and the organising committee chose to give a money box.

A huge thank you goes out to all those who helped and an enormous thank you to those who organised this popular event. Our involvement as a Parish Council was minimal. We did give money for food and some of the entertainment but the rest was raised by donation including money from the recreation ground group. Special thanks to Wendy Evans, Anne Newberry and Nick Shaw - without whom it wouldn't have been such a great success.

The Parish Council during this year has been very busy with the support of Speed Watch getting our speed limit reduced from 40 to 30 mph for the

The Connecting Cambridgeshire project

I hope you will have seen the prominent request elsewhere in the Whaddon News for you to sign up to the Connecting Cambridgeshire project. PLEASE SIGN UP IF YOU HAVE NOT DONE SO ALREADY. Here is the background.

The government has made available a certain sum of money to encourage the counties to invest in rural broadband—central government wants to avoid a “digital divide” between high-tech cities and low-tech rural areas. Every English county has been required to produce a Broadband Plan, indicating how they propose to provide better services to areas like Whaddon in which regular commercial providers are uninterested.

CCC finally completed their plan earlier in 2012. These “plans” are rather more like a specification document than a plan, in which CCC has identified areas in which faster broadband is not going to be enabled without public help. The plans specify only targets of how much of this area is to be helped, not how it should be achieved. This plan was then sent to potential telecoms suppliers who are then supposed to come up with a costed proposal of how they would achieve what the county wants. The results are due in January 2013.

The Connecting Cambridgeshire project is the public face of this initiative, and it is so important that as many of us sign up as possible so that it permits CCC and the suppliers to realise the extent to which we want better broadband. As of 8th November, 40.1% of Whaddon households had signed up, but we'd like

to get to 90%. At present we are number 28 out of 110 eligible villages.

The Parish Council has asked me to be its “Broadband Champion”, and part of my aim is to keep the village informed of progress. Areas in the county which have no chance of receiving commercial investment without some public help are known as “white areas”, and you will be relieved that Whaddon is 100% within this. This ought to mean that we have as good a chance as anyone to get better broadband with public assistance, but the louder we can shout the better it will be.

Most English counties are doing one of these plans, and as a result of them several contracts have been let to improve broadband in other counties (I think Suffolk has done one for example). The irony is that, although the counties have approached several telecoms companies, in every case so far, the contract has gone to BT! I have no reason to believe that Cambridgeshire will be any different.

Only when the results are announced will we get some idea of if and when it might happen, and the technology which will be used. Most likely, if we are included, it will include some form of fibre-optic technology into Whaddon, most likely to cabinets with the last few hundred metres running over the present wires, but there is also the possibility that fibres could even run to some houses.

The main thing to do is for you as a resident of Whaddon to sign up so we can present a significant face to CCC and the supplier. You know it makes sense! More information and web links are available on the village web site: (<http://www.whaddon.org/broadband-whaddon>). I will place any information I get on this web page as well. *Nigel Strudwick*

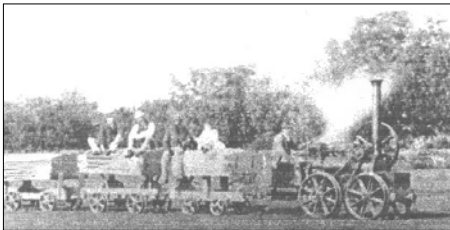
The Industrial Scene in Whaddon

The village sign has a wheat sheaf, a fountain and a dinosaur. Why a dinosaur? A dinosaur represents the mining for coprolite which took place in the village in the 19th century. But what was coprolite?

Coprolite was the name for phosphatic nodules which occurred in Greensand stretching across Cambridgeshire and which contained the fossilised remains of prehistoric creatures. These nodules were rich in the phosphate which fertiliser manufacturers required.

As people migrated to the towns in search of work during the Industrial Revolution there was an increased demand for food and the agricultural community had to find an alternative to the expensive guano fertiliser which cost £14 a ton and as the phosphate from the coprolites was half this price it resulted in great demand for it.

Coprolite workings started in Whaddon in 1861 when Adam Moule, of Christ's College Farm, was granted a 12 year lease to extract coprolite for an annual rental of £180. At the same time Francis Carver, of Hoback Farm and Alfred Coningsby of Rectory Farm were also allowed to extract coprolites on their farms.



Vehicle used to take coprolite to Meldreth Station

Men and boys were employed in the removing of bushes, subsoil and the digging out of the coprolite seams which were then emptied into a washmill. From here they were stored in heaps ready to be taken to Meldreth Station for transport to the fertiliser works in Royston.

The local economy benefited greatly as manure merchants were paying up to £3.60 per ton and an average of 250 tons could be obtained from an acre. Village workers saw the benefit of higher wages and people increased their income by providing accommodation for the influx of workers from outside the village. With the improvement of the parish fortune the Whaddon Church Repair Fund was set up and Christ's College gave £50 from their coprolite fund towards the final cost of £1,450.

Home Cottages on the Meldreth Road, obtained from the Earl of Hardwicke, was made into an all male billet. A former resident S Izzard, as part of a school project described it.

"Over the beer house, 'The New Found Out or Home', and the ground floor sleeping quarters (which eventually became the old chapel) was a long room, forming almost half of the upper floor, where in the 1880s there used to be dancing on Whit Monday.....The fiddle player was Steven Jacklin 'Stibben'. The cook's house was in the middle and towards the Meldreth end were eating quarters and a games room on the ground floor with more sleeping quarters above. Skittles were a popular pastime, played in what was called the Skittle Alley in the wall of the living room". There was also a

mobile wooden shelter on wheels which provided refreshment for the workers.

Two reports from the *Cambridge Chronicle* of September 22nd, 1886 and September 28th, 1867 provide us with details of the social life of the workers.

"WHADDON Works dinner - On Saturday, the 15th inst, Mr Roads gave his annual dinner to upwards of a hundred of his employees, in the spacious building erected for their accommodation. The room gaily decorated with flags for the occasion is 60ft by 19ft and so gave ample space for so large an entertainment. The dinner was supplied by the host Mr A Coningsby, in a most able and satisfactory manner. Mr Cole with his Bassingbourn band was in attendance and greatly promoted the enjoyment of all present, and after spending a most pleasant evening and expressing their thanks to Mr Roads for his kind liberality, the men at ten o'clock quietly dispersed to their respective homes."

"WHADDON Thanksgiving service. On Tuesday last a service was held in the old parish church in the afternoon for the purpose of offering thanks for the blessings of Harvest. The church was thronged and among the congregation was observed a large number of coprolite diggers. After leaving the church, the farm labourers and the coprolite diggers in the employ of Mr Frank C Carver, about 120 in number, preceded by the Bassingbourn choir band, playing a merry quickstep, marched to the coprolite tavern where they enjoyed an excellent dinner, followed by singing and dancing.... The women were not forgotten whilst the men were at dinner they were treated to an excellent tea with plenty of cake...."

By the end of the 1870s the demand for coprolite dropped considerably. This was due to a variety of causes, chiefly the introduction of Free Trade which led to

the import of wheat and meat from Canada and America, and the discovery of a much cheaper rock phosphate in the USA. Farmers and contractors who had depended on the coprolite trade suffered. These conditions led to labour being laid off and machinery being sold.

HOBACK FARM IMPORTANT SALE OF COPROLITE PLANT & MACHINERY

2 8-horse-power PORTABLE ENGINES by Burrell in capital order, 4 Engine Sheds, 3 Coprolite Mills with Rings, Harrows and Working Gear complete Steam Saw bench in perfect order, 4 Tangey's Steam Pumps, a quantity of Tram Iron. Weighbridge, Two and a half horse-power Tom Thumb Traction Engine, Barrows, Pumps, 2 very promising 2 year fillies etc. And other items too numerous to mention.

.....and the consequences

Report in the Royston Crow December 10th 1886

WHADDON - The exceptional circumstances of a large number of able-bodied labourers appearing at the Board Room in the Royston Union on Wednesday last through being out of work..... The surplus in their case is in great measure the after effect of a busy run of coprolite in the neighbourhood. The parishes of Bassingbourn and Whaddon are the first to experience the disappearance of coprolite works. They were called before the board and informed that all the Board could do for them was to give an order for the Workhouse.

By the 1891 census there were only 8 coprolite workers in Whaddon in contrast to 73 listed in 1871.

S&J Ralls November 2012